



markem·imaje

a **DOVER** company

CoLOS[®] Software & Solutions

Minimize waste, achieve compliance,
and drive efficiency

Printer Intelligence | **Packaging Intelligence** | Brand Intelligence

Did you know?

You can reduce costs of manual data entry and message data maintenance by

90%



You can cut your changeover duration by

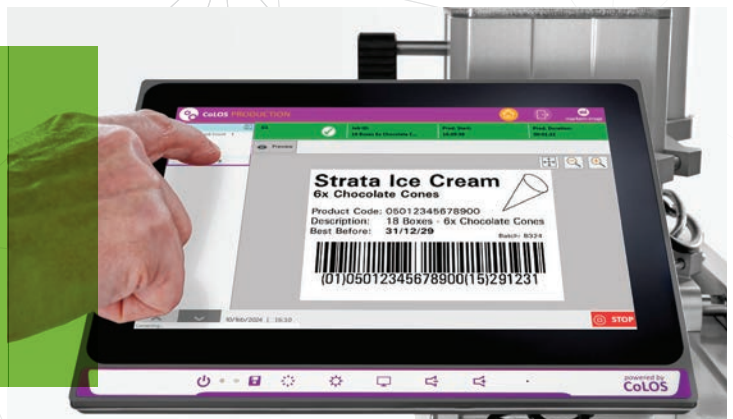
50%

and save hundreds of hours per year

You can ensure that your finished products are correctly marked and

100%

compliant with regulations



You can reduce your coding errors and cut up to

15%

off your total running costs

Automate packaging operations

CoLOS® Software and Solutions is a comprehensive packaging automation software that revolutionizes the way you design, produce, and manage your packaging operations. From message design and label creation to pallet tracking and ERP/WMS/MES integration, our software streamlines and digitizes every step of the packaging process, enabling you to:



Increase efficiency and productivity



Reduce errors and waste



Ensure compliance and traceability



Gain real-time visibility and control

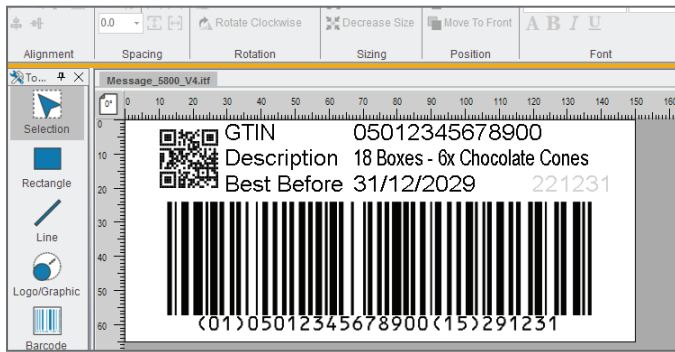


Optimize operations and make data-driven decisions

With **CoLOS®** Software and Solutions, you can transform your packaging operations into a seamless, automated, and connected process that drives business growth and efficiencies.



Key features

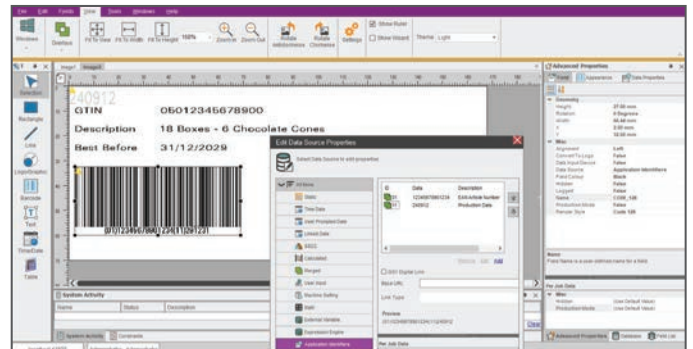


Message Design

Centrally design simple and complex messages that are compliant with regulations in a single user interface.

Data Management

Auto populate messages with SKU details and data from EPR master product table.

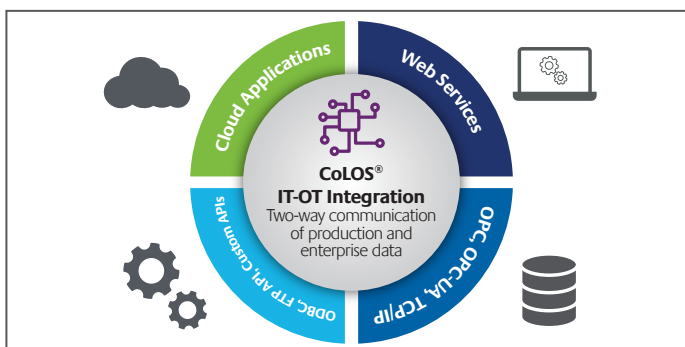
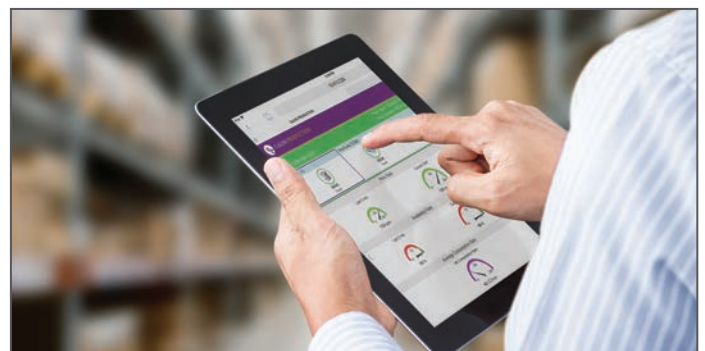


Design Control

Control approval workflows and security of the message designs.

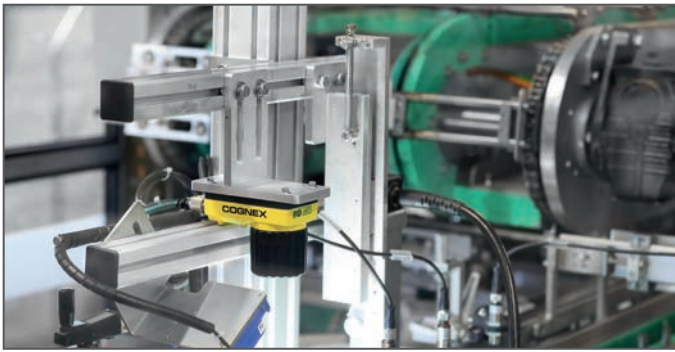
Printer Performance

Gain complete visibility to printers performance for view faults, warnings and generate reports for quick analysis and decision making.



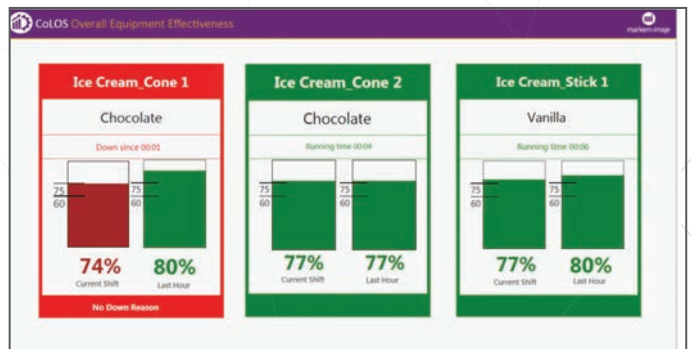
IT/OT Integration

Enable real-time communication between Enterprise data and equipment/ technologies involved in the packaging operations for better, collaboration



Overall Equipment Effectiveness (OEE)

Collect data from all the devices on the line including printers, scanners, cameras, PLC, Data systems etc. to create comprehensive reports on production and performance.



Promotional Coding

Add unique codes/identifiers to your products to closely track their promotions, personalize offerings and engage consumers for repeat purchase and loyalty.

Auto Pallet Track | Manual Pallet Track

Design and print distribution compliant labels such as GS1-SSCC using design wizards with the correct data structures that can be read throughout the supply chain.



Production Control

Automate packaging operations on the line using a production control interface for operators.

Intelligence beyond the mark.

Solutions from code to connected product

Our comprehensive packaging automation solution comprises several modules that work together to streamline and optimize your packaging operations. The following modules are designed to address specific pain points and requirements:



IT-OT Integration



Paperless Quality



Serialization & Aggregation



Data Intelligence



Message Management & Control



Marking & Coding



Verification



Line Control & KPIs



Pallet Track



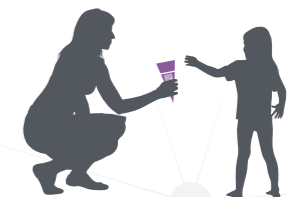
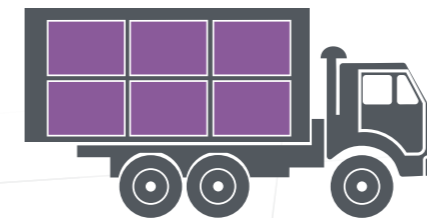
Traceability



Real-time Authentication



Connected Consumer



Primary coding

Secondary coding

Tertiary coding

Message Management & Control



Centralize message design, approval, and management

IT/OT Integration



Ensure communication and integration between production and ERP/WMS/MES/IT data

Pallet Track



Track and manage pallets in real-time, throughout production

Line Control & KPIs



View and optimize printer performance and production data for detailed reporting and analytics

Verification



Ensure accurate and compliant label printing, with real-time verification

Paperless Quality



Ensure accurate and compliant label printing, with real-time verification

Serialization & Aggregation



Execute brand promotion campaigns with unique codes

Connected Consumer



Empower brands to engage with consumers for retention and loyalty

CoLOS[®] applications tailored to your needs and size

Part of the CoLOS[®] family of applications which are available in different bundle sizes for all your printer, line, and factory solutions. Our application modules come with information and automation interface add-ons to ensure seamless integration with your existing infrastructure.

CoLOS[®] Base

For emerging players and early-stage start-ups

Design compliant labels, assign them to printers and print with a range of Markem-Imaje printers

CoLOS[®] Line

For growing and small-medium businesses

Design compliant labels, integrate, control and automate printing operations on a single line.

CoLOS[®] Factory

For large businesses and global players

Design compliant labels, integrate, control and automate printing operations on multiple lines.

CoLOS[®] OEM

For packaging equipment OEMs

Drive the widest range of primary, secondary and tertiary printers from Markem-Imaje simply by embedding the full power of CoLOS[®] software.

CoLOS [®]	CoLOS [®] Base	CoLOS [®] Line	CoLOS [®] Factory
	1 printer at a time	Up to 4 networked printers	Up to 99+ networked printers
Message Design & Data Management	✓	✓	✓
Production Control	-	✓	✓
Printer Performance	-	Optional	Optional
Overall Equipment Effectiveness OEE	-	Optional	Optional
Mark & Read	-	Optional	Optional
Packaging Integrity	-	Optional	Optional
Promotional Coding	-	Optional	Optional
Connected Consumer	-	Optional	Optional
Design Control	-	Optional	Optional
Paperless Quality	-	Configurable	Configurable

Solution Services

Project management by the Solution Services team ensures seamless and economical implementation of Packaging Intelligence solutions. Our team will identify which solution, or combination, best suits your needs and oversees all aspects of solution implementation, freeing you up to focus on other priorities.

Discover	Deliver	Support
We offer workshops or site surveys to help define your requirements for successful projects	We offer complete turn-key project delivery services. Taking full responsibility for printing technology, vision, and software solutions.	We also offer a competitive range of support contracts for software and full-site support services.

CoLOS® V6 is for Windows 10 32/64bit, Windows 11 64 bit, Server 2012/2016/2019/2022 64 bit
Minimum system requirements: 3GB RAM, Intel 2.6 GHz (multicore CPU preferred), 5GB free hard disk space
Production UI Browser Firefox 120.0 and onwards/Chrome 110 and onwards /Edge 110 and onwards

We reserve the right to amend the design and/or specifications of our products without notice.
© 2024 Markem-Imaje, a Dover Company. MARKEM-IMAJE and the MI MARKEM-IMAJE Logo, and CoLOS are registered trademarks of Dover Europe Sàrl in the United States, the European Union and various other countries. Photos: Ginko, iStock - E1



markem•imaje

a  company

9, rue Gaspard Monge - B.P. 110
26501 Bourg-lès-Valence Cedex France
+33 (0) 4 75 75 55 00
markem-imaje.com