



markem·imaje

a **DOVER** company



Software

## Paperless Quality

Digitize production start-ups  
and quality check

# Digitize production start-ups and quality check

Within the dynamic landscape of modern packaging operations, production start-up checks and scheduling are critical components of a smooth and efficient operation. However, many manufacturers still rely on manual processes, paper-based checklists, and legacy software systems, leading to:

- Increased risk of human error and missed important inspections
- Limited visibility to production data and root cause of issues
- Difficulty in tracking and analyzing production approval processes
- Inefficient and non-secure communication and collaboration among teams

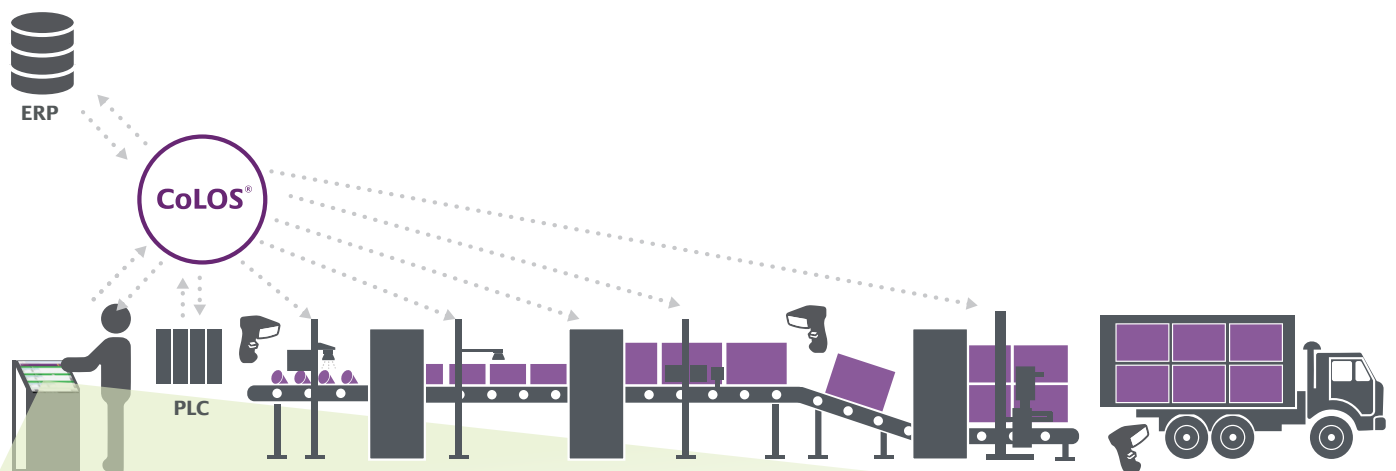


It's time to digitize your production start-up and scheduling quality check process.

## Paperless Quality

Our digital production start-up and scheduling solution helps manufacturers to streamline their operations, reduce errors, and increase efficiency. With our intuitive and user-friendly platform, you can:

- Drive Quality Improvements
- Reduce cost and time in managing paper-based quality checks on your production lines
- Be able to enforce quality procedures and have real-time visibility of critical quality data



### Production checklist:

- Quality checks
- Product verification
- Health safety check
- Hygiene checks

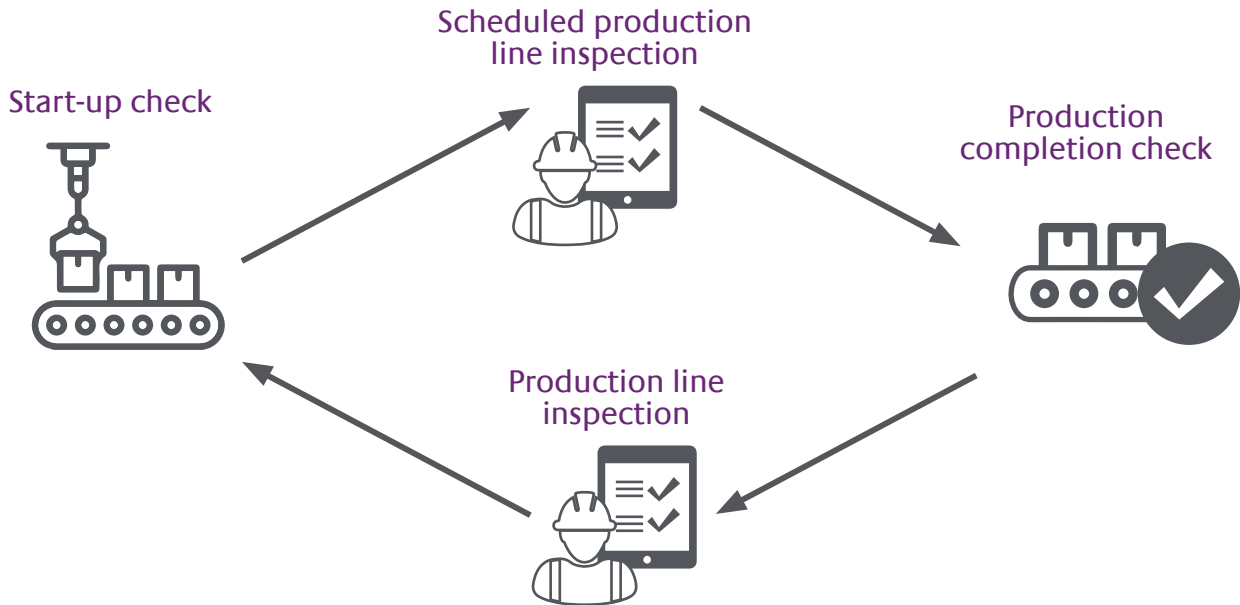
- Machine start up procedures
- Real Equipment status
- Easily visible to operators

### Scheduled Actives:

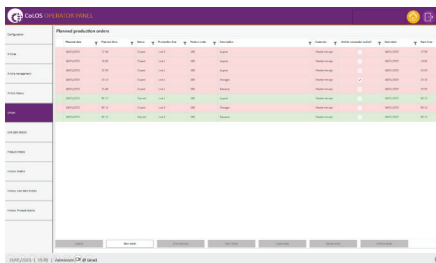
- Equipment or Line check
- Product Quality checks
- Product verification

# How we make it happen

Markem-Imaje is committed to helping you achieve the best quality codes for your specific application. We provide customized sample print test support that considers your code, content, line speed and substrate to ensure your product is secured—from the moment it is coded until it reaches your final consumer.

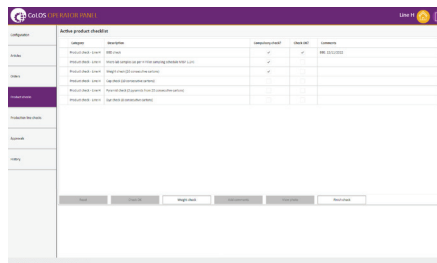


## Production line quality check



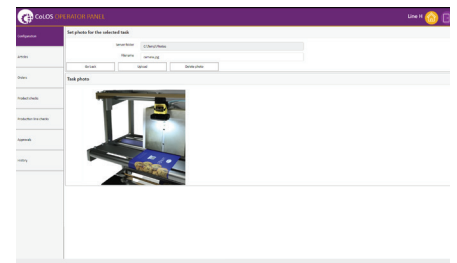
- Digitize start-up check list at start of production shift or change of production schedule.
- Configure user data, roles and permissions in CoLOS® Database for authorized access and audit trail of user actions.
- Ensure correctness of staged products and packaging material and record it digitally.
- Check for hazardous stuff, quality control SOPs, equipment, PLCs status.
- Define workflows for digital quality checks, including product-specific checks, assignment of tasks, deadlines, flexible approvals and escalation procedures.

## Scheduled quality inspections



- Define and schedule digital Quality Assurance checklists for each production line, including products to inspect and acceptance criteria.
- Set up email notifications and alerts on mobile devices for failed quality checks, interruptions, deviations, equipment issues, line checks overdue or shift changeover.
- Associate same task with one or more checklists and configure article tolerance, important tasks, mandatory and non-mandatory checks.
- Data analytics and historic reporting tools to track quality metrics, identify trends, and provide insights for improvement.

## Production completion check



- Verify if the finished product quality meets the quality standards.
- Verify if the finished product quantity is within the wastage tolerance limit.
- Check for correct packaging and messaging.
- Generate automated production quality historical reports summarizing deviations and issues.

# Business Impact

## Why choose us?

- Increased Accuracy and reduced errors/inconsistencies due to Interlinking between product SOPs and production line.
- Faster data collection and processing for real-time or historical investigations enabling quicker start-up and scheduling decisions hence, improved efficiencies
- Real-time visibility into production status, enabling better communication, collaboration and continuous improvement.
- Visibility to data-driven insights that enable informed decisions on production planning and scheduling.
- Minimized paper usage, reducing administrative burdens and positively impacting the environment and sustainability.
- Digital records to facilitate effortless auditing and compliance with regulatory requirements.
- Automated alerts and notifications in real-time ensure timely actions and minimized delays.
- More secure than paper-based systems, reducing the risk of data loss or tampering.

## Solution Services

Project management by the Solution Services team ensures seamless and economical implementation of Packaging Intelligence solutions. Our team will identify which solution, or combination, best suits your needs and oversees all aspects of solution implementation, freeing you up to focus on other priorities.

Discover	Deliver	Support
We offer workshops or site surveys to help define your requirements for successful projects	We offer complete turn-key project delivery services. Taking full responsibility for printing technology, vision, and software solutions.	We also offer a competitive range of support contracts for software and full-site support services.



markem•imaje  
a  company

9, rue Gaspard Monge - B.P. 110  
26501 Bourg-lès-Valence Cedex France  
+33 (0) 4 75 75 55 00

[markem-imaje.com](http://markem-imaje.com)